

CHATHAM-KENT BATTERY ENERGY STORAGE SYSTEM



JANUARY 27, 2023

SUMMARY OF THE COMMUNITY PUBLIC MEETING MINUTES

E-LT1



INNERGEX

Renewable Energy.
Sustainable Development.

BACKGROUND

The Chatham-Kent Battery Energy Storage System (“BESS”) Project (the “Project”) is being developed in the municipality of Chatham-Kent, Ontario, by Kruger Energy and Innergex Renewable Energy, two leading independent renewable energy producers (the “Proponent”). It will provide electricity to the grid when dispatched by the IESO to help ensure a reliable supply of electricity in the region. It will have the capacity to provide up to 145 megawatts (MW) over 4 hours (580 MWh) and is expected to be operational in the spring of 2026.

The Chatham-Kent BESS Project will be submitted into the Independent Electricity System Operator’s (“IESO”) Expedited Long-Term Request for Proposals (“E-LT1 RFP” or “RFP”) to address the increasing demand for electricity in southwestern Ontario.

COMMUNITY PUBLIC MEETING

The Proponent held a community public meeting for the Project on 27 January 2023, at Ryder Hall in Tilbury Arena, in Tilbury, Ontario, from 5:00 PM to 8:00 PM.

Eleven representatives were present at the meeting, including experts in:

- Project development;
- Engineering design;
- Health and safety;
- Project construction and operations;
- Environment and noise propagation; and
- Communication and sustainability.

In addition, two independent experts on BESS safety and environment and permitting were present.

During the event, the Proponent representatives engaged with the public to present information, discuss the Project, and address any questions and concerns.

In conformity with the RFP requirements, the community public meeting described and displayed:

- The identity and contact information of the Proponent;
- The name, nameplate capacity and storage technology of the long-term reliability project;
- A scaled map showing the project site boundaries, the location of the connection point and the connection line.

The panels presented and photos of the event are included in **Annexes A and B** respectively.

MEETING ADVERTISEMENT

Leading up to the event, the community public meeting was advertised in the following ways:

- The notice was mailed to all adjacent landowners, and to every residence and farm/business within at least 1 km of the Project area.
- The notice was published in three local newspapers the week prior to the event. **(Annex E)**
- The notice was sent by email to representatives of the Municipality of Chatham-Kent, i.e., the Mayor's office and the Council Clerk. The Proponent reached out by phone as a follow-up to the email.
- The notice was sent to Indigenous communities who exercise their constitutionally protected Indigenous or Treaty Rights on the land where the Project site is located.

The notice is shown in **Annex C**.

INFORMATION PRESENTED

Panels presented key information on the Proponent, BESS technology, BESS Safety, the Project location, and the Project context. The Proponent and subject matter experts were present to explain the materials, receive feedback and answer questions.

The panels included:

Theme	Information
Welcome	Project name
About Kruger	Company overview, sectors of activity, assets
About Innergex	Company overview, assets, history
BESS Technology	What is a BESS? How does it work?
BESS Safety	BESS Chemistry, safety standards and regulations, safety design, safety systems
Project Location	Map
Project Context	Electricity need, IESO procurement, regulatory compliance

A Project brochure was also offered to each visitor. The brochure provided general Project information as well as answers to common questions related to BESS.

The information panels and brochure are available for viewing and download on the Project website, and are also attached to this document in **Annexes A and D**.

PUBLIC ATTENDANCE

The public meeting was attended by approximately 30 visitors, including one municipal councillor. Most visitors reside in the Project's vicinity or nearby communities, such as Tilbury and Merlin. A few visitors came from neighbouring communities.

FEEDBACK RECEIVED

Proponent representatives engaged all the visitors at the public community meeting and requested that everyone complete a feedback form. Six people chose to submit a feedback form before leaving the meeting. All six respondents found the event "Very useful" and considered that their questions about the Project had been answered. Five respondents felt "Positive" about the Project, while one felt "Cautiously positive".

Respondents were also encouraged to provide more general feedback through the feedback forms or by other means, and eight individual questions and comments were provided in addition to those received verbally during the evening. The questions and comments are provided in the table below along with the Proponent's responses. In cases where people requested personal answers, the Proponent is committed to conducting follow-ups on a one-on-one basis.

QUESTION AND ANSWER

Theme	Question / Comment	Proponent Response
Proponent	Why are Kruger and Innergex partnering in the Project?	Kruger and Innergex join forces to benefit from each other's experience. Kruger has a local presence and good knowledge of the territory while Innergex has more experience in deploying large-scale battery storage projects.
Location	Why was this site chosen for the Project?	The parcel already contains a switching station allowing easy interconnection to the grid using a short transmission line. By using existing infrastructure, the footprint of the Project is being reduced. Also, the area is sparsely populated, the parcels are large and have few environmental and human constraints.
Communication	Were the neighbours contacted?	All landowners and business owners within at least 1 km of the Project were invited to the public meeting. The invitation notice included a link to the Project website where additional information can be obtained.
BESS operations	How are the batteries heated and cooled?	The batteries' operating temperature is maintained through individual HVAC (Heating, Ventilation and Air Conditioning) units in each container, that will maintain the interior temperature within a specific range. The batteries are air-cooled.
Zoning	Will the project area change zoning?	It will be up to the municipality to determine whether the zoning by-law allows the installation of the Project on this parcel, or whether a zoning amendment is required. We will work with the municipality to ensure that the Project respects all municipal regulations and zoning will be discussed.
	Will a change in zoning affect my ability to reside near the project?	The zoning and land use of other parcels around the Project won't be affected. A change in zoning for the Project would affect only the Project area.

Setbacks	How close can the Project be to buildings and other things?	The Project must comply with federal, provincial and local regulatory constraints. The most stringent setback likely to apply to the Project is related to noise compliance. The distance to nearby residences will vary to meet the provincial noise limit of 40 dBA.
Noise	How far can you hear the batteries?	The distance where sound from a BESS project can be heard varies with the type of equipment used, the size of the project, and the installation of sound walls/barriers to dampen the sound, as well as other elements present in the environment, such as vegetation and buildings. In the end, noise emitted by the Project will comply with Ontario's strict noise regulations.
	What part of the battery system makes noise?	Noise sources associated with BESS projects typically are the HVAC equipment located on the sides of the battery enclosures, the power conversion system units and the main power transformers.
Safety	How safe are battery systems? Is there a risk of fire?	<p>BESS are already safely installed and operating in many urban environments. These systems are made of the same type of batteries you find in mobile telephones, electric vehicles, and portable computers. A local team of operations personnel will be present to monitor and maintain the BESS to the highest industry standards.</p> <p>Safety measures will include:</p> <ul style="list-style-type: none"> • Preparation of a Site Security and Safety Response Plans in coordination with first responders and the municipality. • Training of first responders prior to construction and as required thereafter. • Storage containers contain integrated fire suppression systems, in compliance with Ontario Fire Code. • 24/7 monitoring of the entire system down to the battery module level. <p>In the unlikely event that the safety measures are unable to prevent a fire, the compartmentalized design of the BESS will prevent the spread to adjacent units. As an additional preventive measure, the areas around the battery units will be clear of vegetation.</p>
	Can the batteries leak?	No, in operation or standby the batteries do not leak.

	Is there a risk of stray current?	The whole installation will have a ground mesh to avoid any risks. The batteries themselves, before going through the power transformers, operate at low voltage.
Land use	Will the Project have any effects on the agricultural land?	The Project will not permanently change the agricultural use of the land. At the end of its life, the Project will be removed and the area will be rehabilitated and returned to its agricultural use.
	Will the Project affect natural gas lines or agricultural tiles?	The environmental constraints analysis is ongoing. Natural gas lines will be identified in coordination with the service provider and appropriate avoidance measure will be implemented. Agricultural tiles affected by the Project will be corrected in coordination with the landowner to ensure proper drainage.
End of life	How long will the project be there? Will it be removed after?	Contracts under the E-LT1 are for a period of up to 22 years. The technology is designed to perform efficiently for the whole 22-year contract. At the end of the project's life, everything will be removed and the land will be rehabilitated to its agricultural use.
	What happens with the batteries when the Project is removed?	The decommissioning and recycling of the batteries are a critical piece of BESS projects to assure environmental responsibility. A decommissioning plan will be prepared before the decommissioning of the Project to identify the best way for recycling the batteries. We will take advantage of the recycling technology that will continue to improve over the next 20 years, and will comply with the applicable regulations at that time.

CONCLUSION

Kruger Energy and Innergex Renewable Energy are committed to promoting an open, inclusive, and transparent public engagement process. We welcome all residents to contact us with questions or concerns, and we will endeavour to answer them as soon as possible.

Many of the questions from the public were addressed by the Proponent and subject matter experts during the public meeting. This document summarizes the general themes that were brought up. More questions will also be addressed in time, as studies are completed and Project design is optimized leading up to pre-construction. Continued consultation will occur with people from the community to provide as much information as possible.

Follow up information on the most commonly asked questions will be posted on the website and addressed in one-on-one meetings as well as in future public events. We envision conducting future Project stakeholder information sessions as the public is notified of Project advancement, and ultimately to the start of construction and eventual operation of the Project. The Engagement Plan can be found on the project's website and will be updated as the Project enters into future phases of development.

CONTACT US

Please contact the Chatham-Kent BESS Project development team at any time if you have questions, comments or any interest in the Project.

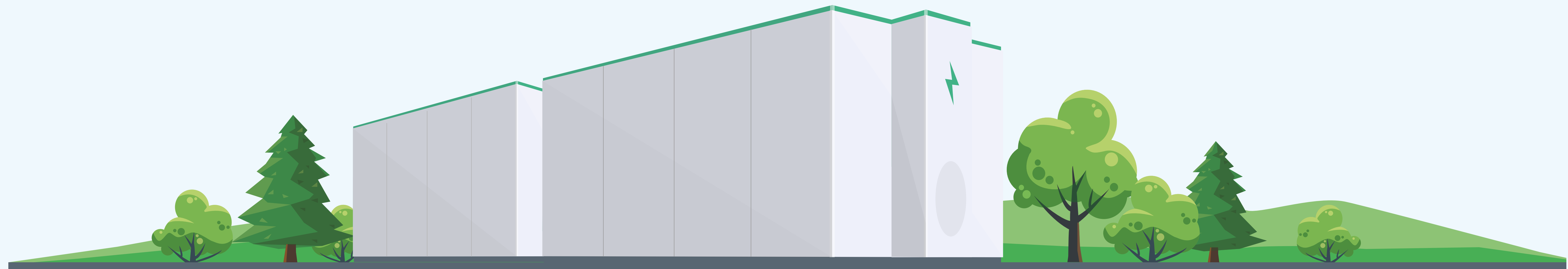
Email: info@chathamkentbess.com

Phone: [1 855 447-3999](tel:18554473999)

Website: <https://www.chathamkentbess.com/>

ANNEX A: PUBLIC MEETING PANELS

CHATHAM-KENT BATTERY ENERGY STORAGE SYSTEM



CHATHAM-KENT
BATTERY ENERGY
STORAGE SYSTEM



ABOUT KRUGER ENERGY

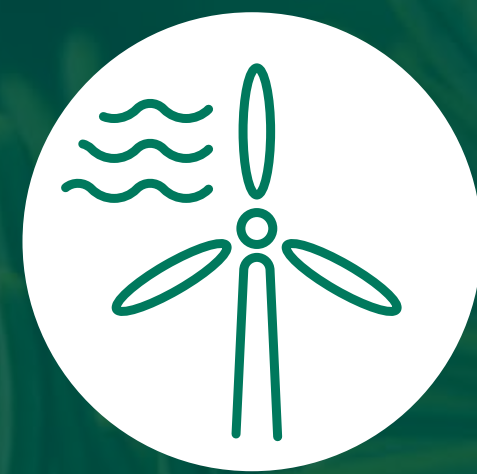
Established since 2004, Kruger Energy develops, builds and manages a portfolio of renewable energy assets that contributes to the economic growth and well-being of our host communities.



**MAJOR
INDEPENDENT**
power producer
of renewable
energy



**5 TYPES OF
RENEWABLES:**
wind energy,
hydroelectricity,
biomass
cogeneration,
solar & storage



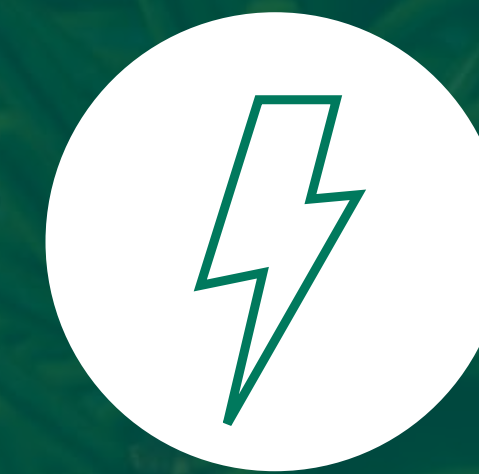
46 FACILITIES
in Canada,
the U.S. and
Guatemala



**OVER 1 GW
OF PROJECTS**
under
development



**ANNUAL
PRODUCTION:**
2,750 GWh



**INSTALLED
CAPACITY:**
650 MW



**80+
employees**

**CHATHAM-KENT
BATTERY ENERGY
STORAGE SYSTEM**



KRUGER ENERGY SECTORS



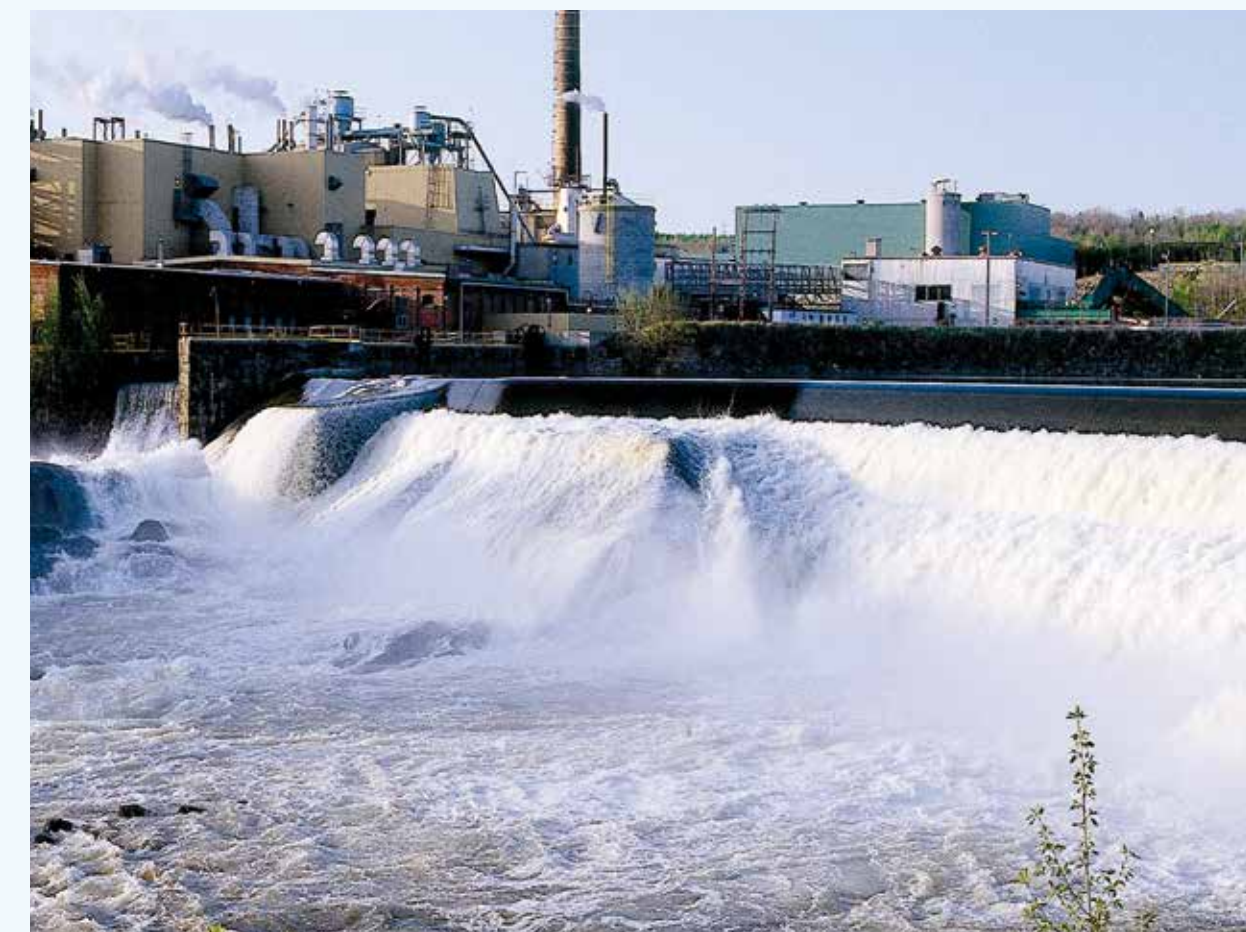
SOLAR
10 MW



WIND
325 MW



BIOMASS
115 MW



HYDRO
195 MW

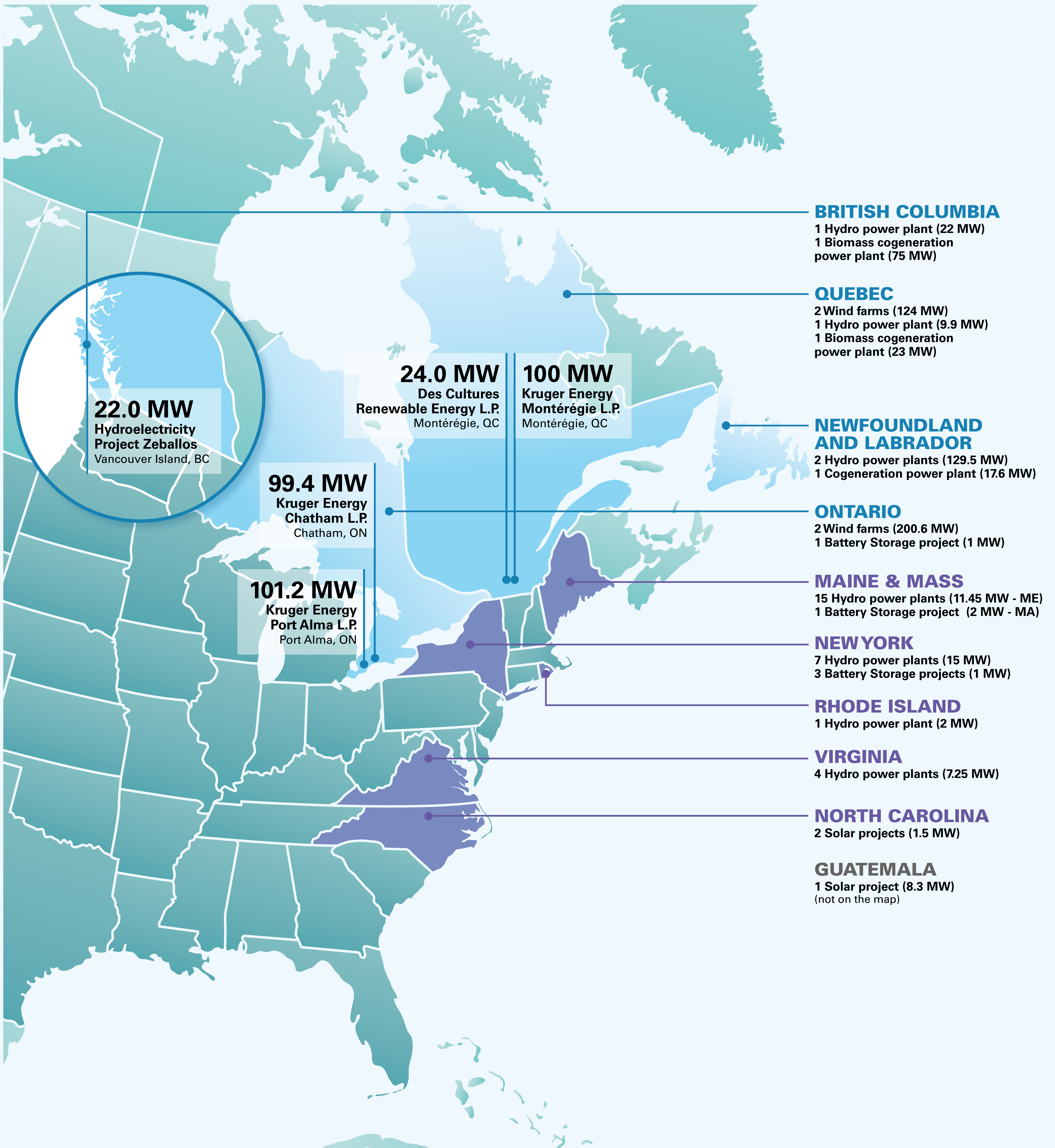


ENERGY STORAGE
5 MW

**CHATHAM-KENT
BATTERY ENERGY
STORAGE SYSTEM**



KRUGER ENERGY CAPACITY



**CHATHAM-KENT
BATTERY ENERGY
STORAGE SYSTEM**



ABOUT INNERGEX

Innergex Renewable Energy is a Canada-based renewable energy company that develops, acquires, owns and operates hydroelectric, wind, solar and energy storage facilities.

Founded in 1990, Innergex conducts operations in Canada, the United States, France and Chile, and its mission is to build a better world with renewable energy.



Glen Miller, an 8 MW run-of-river hydroelectric facility on the Trent River near Trenton.



Stardale, a 27 MW solar photovoltaic facility in St. Eugene near Hawkesbury.

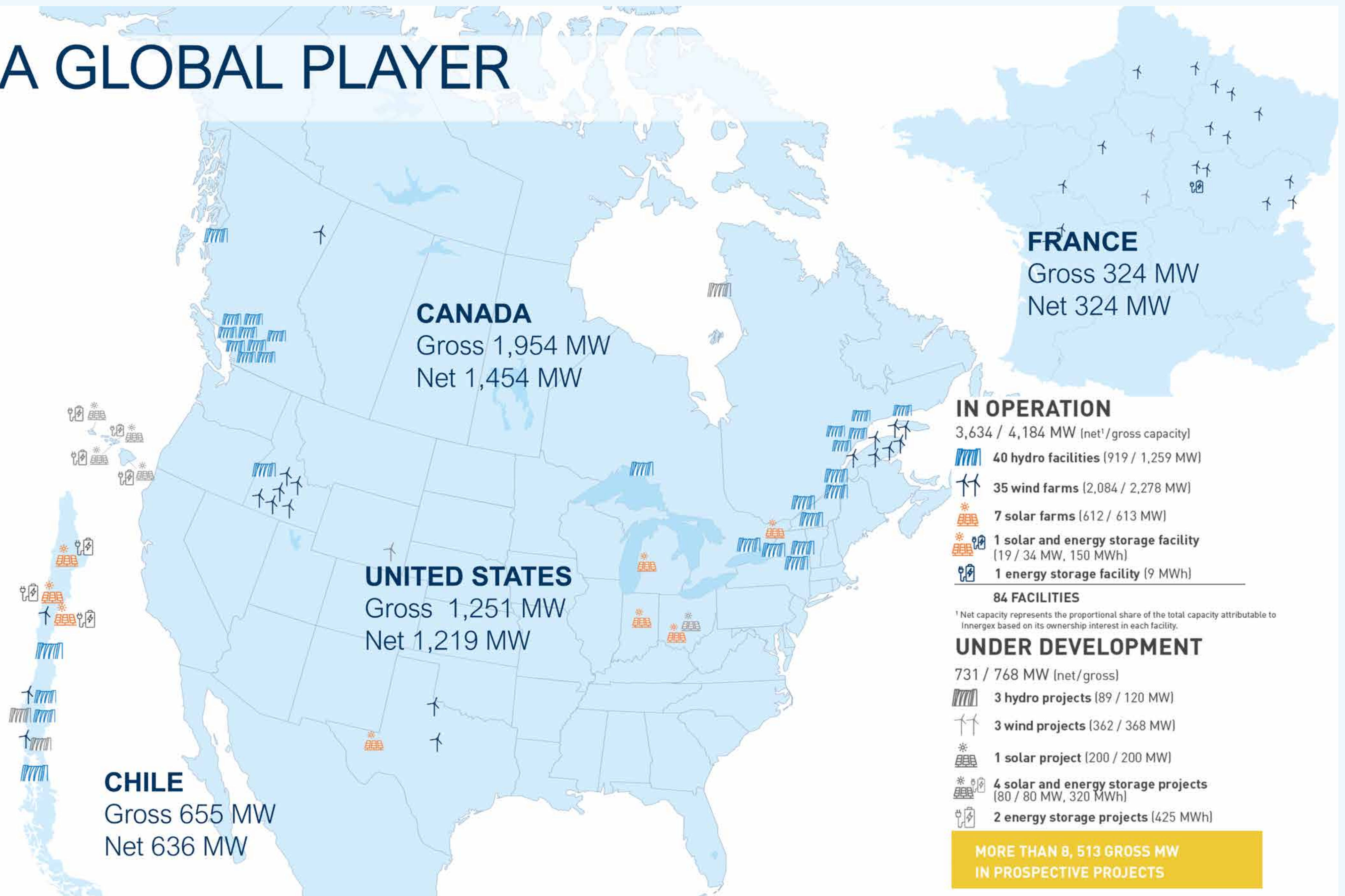
**CHATHAM-KENT
BATTERY ENERGY
STORAGE SYSTEM**

 **Kruger**
Energy

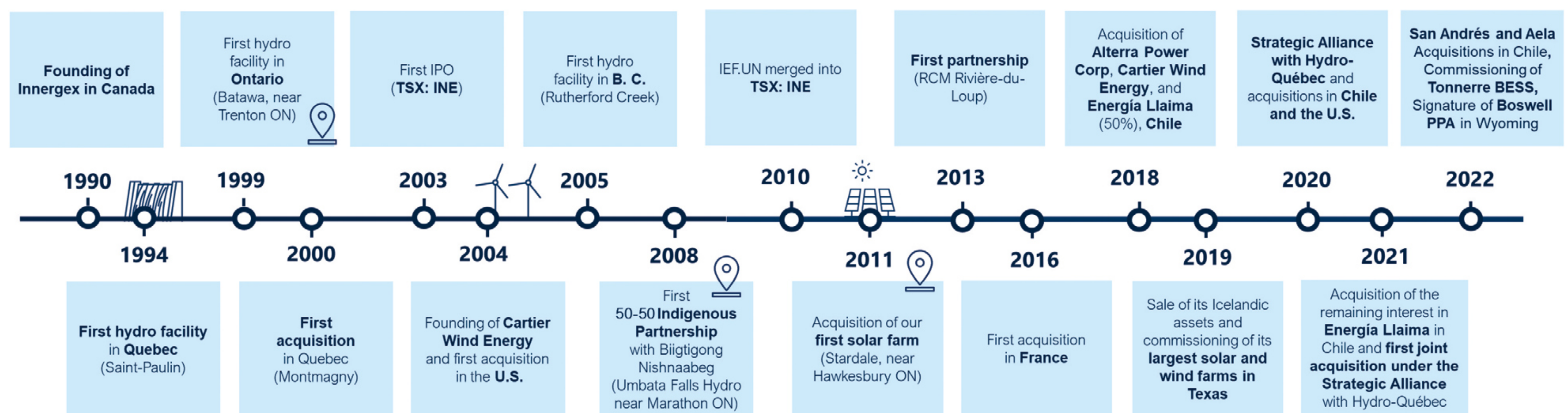
INNERGEX
Renewable Energy.
Sustainable Development.

ABOUT INNERGEX

A GLOBAL PLAYER



FOUNDED IN 1990, INNERGEX HAS BEEN ACTIVE IN ONTARIO SINCE 1999.



**CHATHAM-KENT
BATTERY ENERGY
STORAGE SYSTEM**



INNERGEX
Renewable Energy.
Sustainable Development.

ABOUT INNERGEX

KEY FIGURES

100%
RENEWABLE
ENERGY

Hydro, wind,
solar and
storage facilities



**84 operating
facilities**
and 13 projects under
development¹



Gross installed
capacity
4,184 MW¹



Enough electricity
to supply
1,083,528 households
with clean energy in
2021



Over
525 employees



Enterprise value²
\$9.9 billion



Market
Capitalization²
\$3.6 billion



Dividend / Yield²
\$0.72 / 4.1%

1. As of November 7th, 2022, date of the Quarterly Report release.
2. All financial data are as of September 30th, 2022.

BUILDING A BETTER WORLD WITH RENEWABLE ENERGY

With a **sustainable business model** that balances People,
our Planet and Prosperity.



People

We are a team of
passionate individuals
who build strong
partnerships with local
communities.



Planet

We believe
that renewable energy
is part of the solution
to climate change.



Prosperity

We generate value for
our employees, our
shareholders,
our partners and our
host communities.

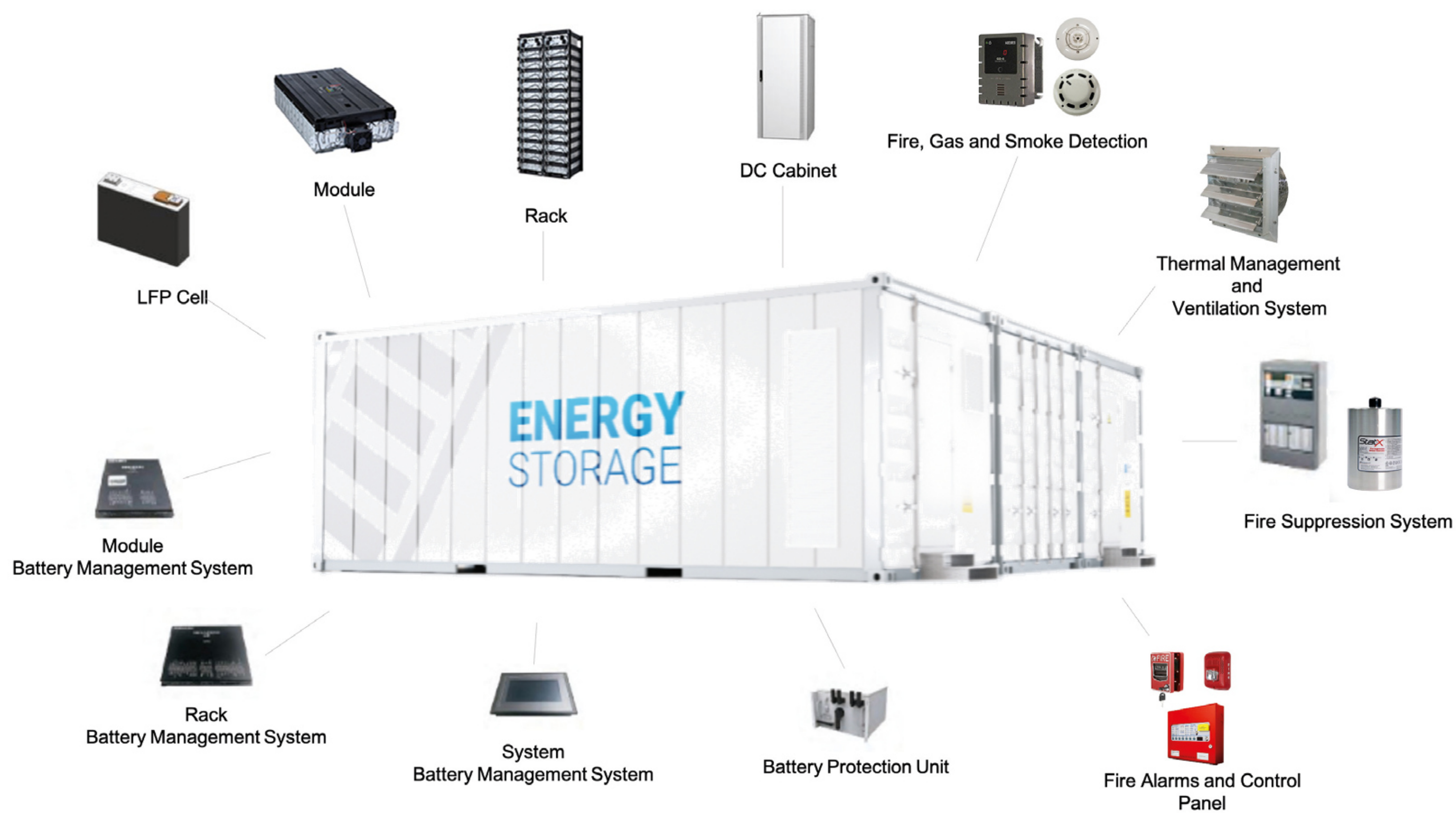
**CHATHAM-KENT
BATTERY ENERGY
STORAGE SYSTEM**

 **Kruger**
Energy

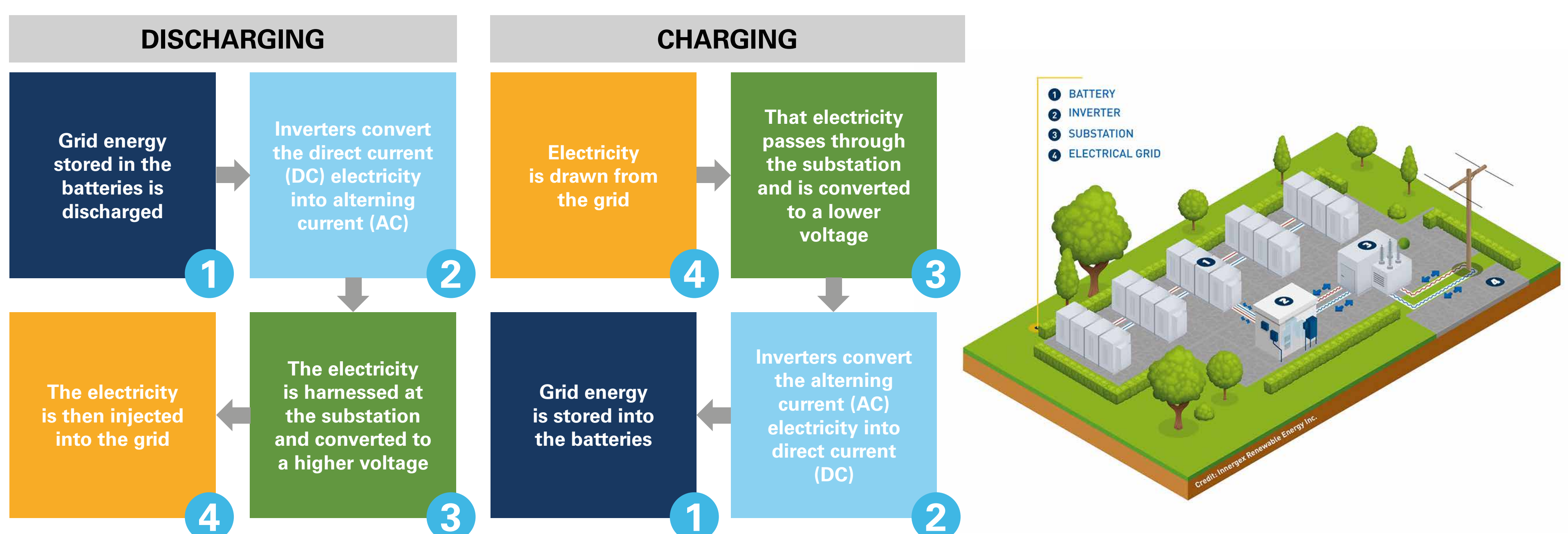
INNERGEX
Renewable Energy.
Sustainable Development.

BATTERY ENERGY STORAGE SYSTEM TECHNOLOGY

WHAT IS A BATTERY ENERGY STORAGE SYSTEM (BESS)?



HOW DOES A BATTERY ENERGY STORAGE SYSTEM WORK?



BATTERY ENERGY STORAGE SYSTEM SAFETY

LFP – A SAFER BATTERY CHEMISTRY

- Use of the most secure technology in the market – Lithium Iron Phosphate or LFP
- High level of safety with excellent lifespan
- Use of abundant non-toxic materials (Iron and Phosphate)
- Very tolerant to mechanical abuse (does not explode or catch fire when perforated)
- Less subject to thermal-runaway with extremely low temperature increase

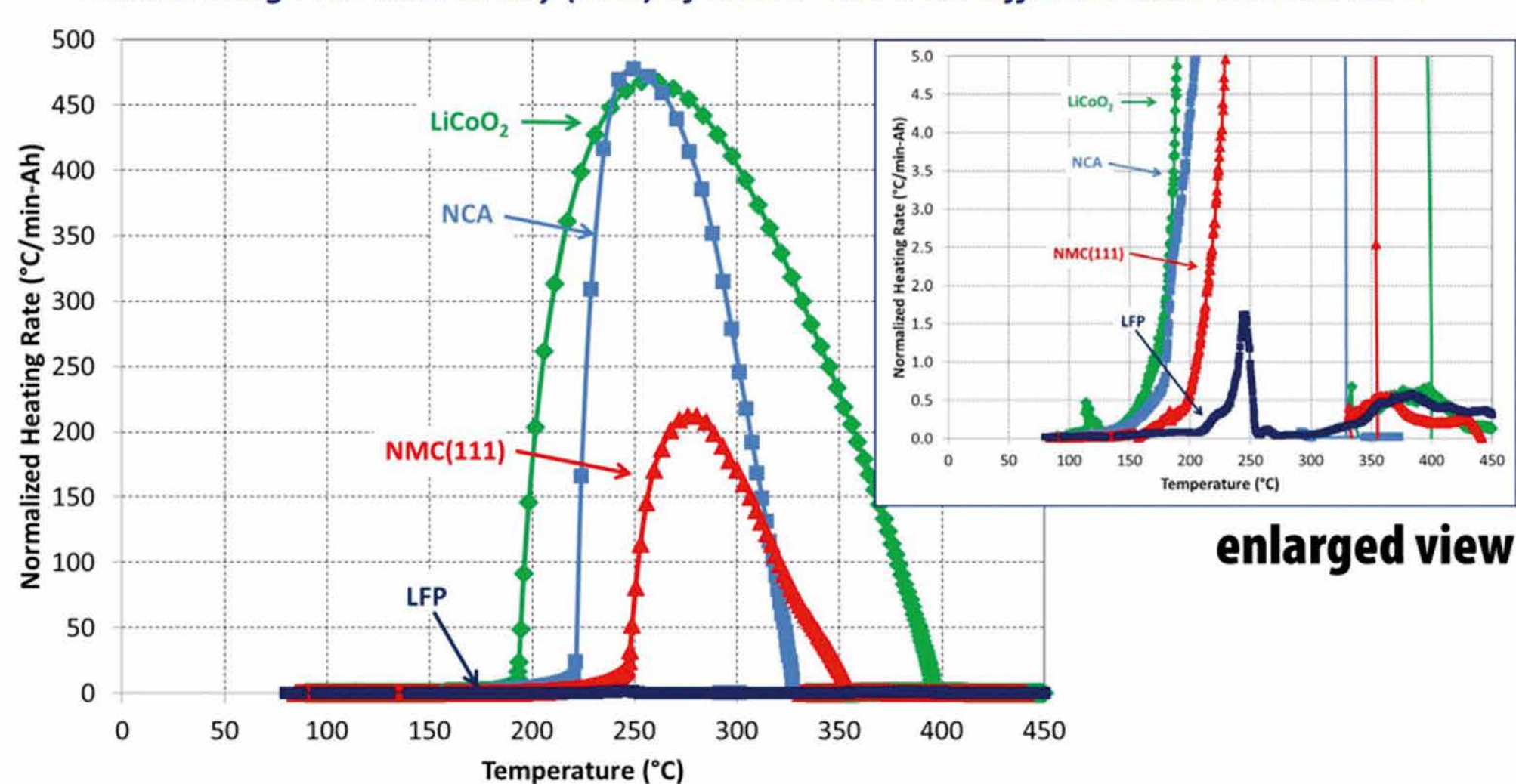
WHAT IS “THERMAL-RUNAWAY”?

Thermal runaway is one of the primary risks related to lithium-ion batteries. It is a phenomenon in which the lithium-ion cell enters an uncontrollable, self-heating state.

Thermal Runaway: Impact of Cell Chemistry

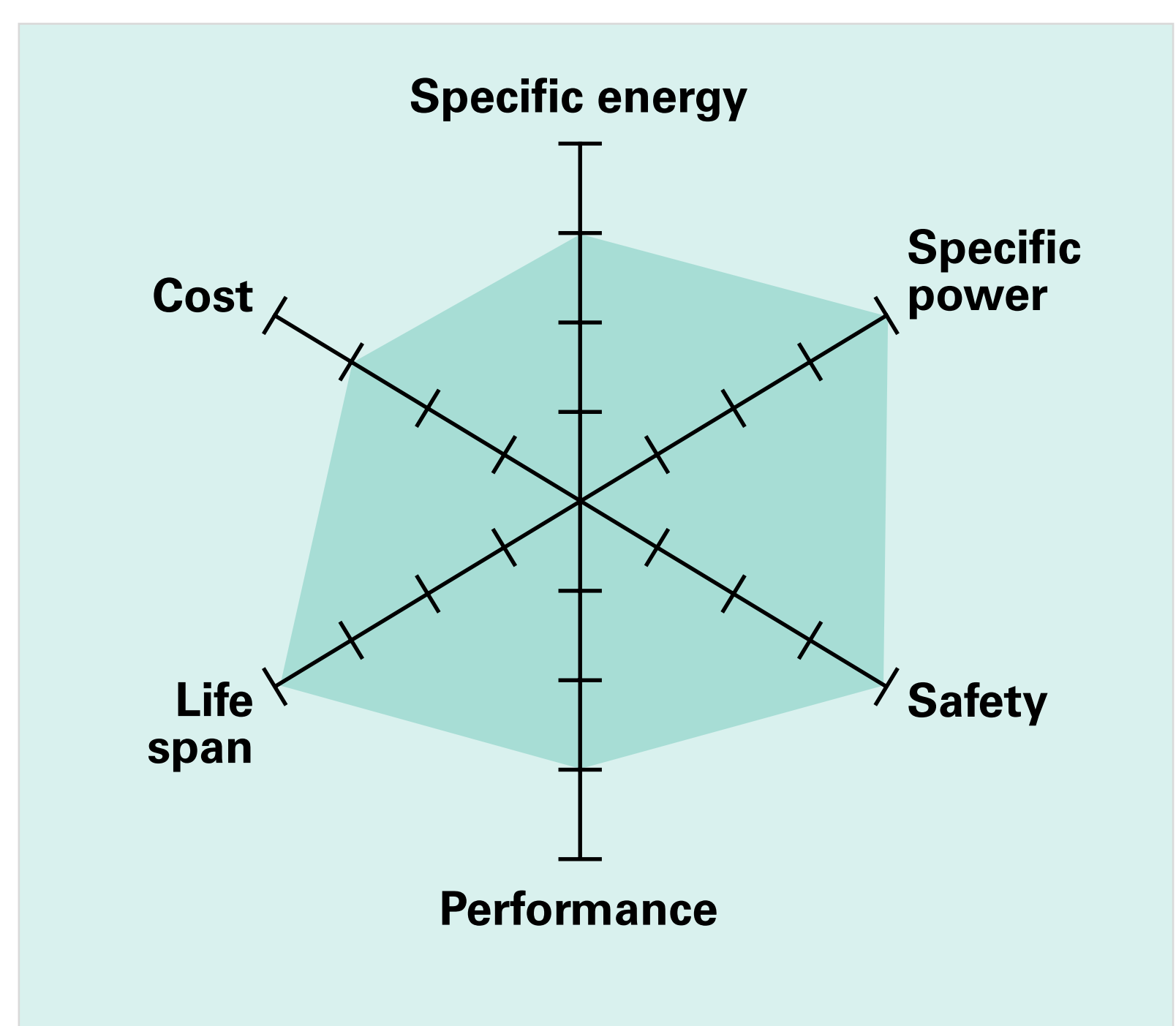


Accelerating rate calorimetry (ARC) of 18650 cells with different cathode materials



- All measurements at 100% SOC and for cells with 1.2 M LiPF₆ in EC:EMC (3:7)
- Differences in runaway profiles are related to oxygen release and combustion at different cathodes

Source: Sandia National Laboratories



BATTERY ENERGY STORAGE SYSTEM SAFETY



**NATIONAL FIRE
PROTECTION ASSOCIATION®**



SAFETY STANDARDS AND REGULATIONS

All the equipment used will respect all the current industry standards and regulations:

- **NFPA 855** “Standard for Installation of Stationary Energy Storage Systems”
- **NFPA 70E** “Standard for Electrical Safety in the Workplace”
- **NFPA 69** “Standard on Explosion Prevention Systems”
- **ICC IFC** International Fire Code
- **UL9540** “Standard for Storage Systems and Equipment”
- **UL9540A** “Test Method for Evaluating Thermal Runaway Fire Propagation in Battery Energy Storage Systems”
- **UL1973** “Standard for Batteries for Use in Stationary, Vehicle Auxiliary Power and LER Applications”
- **IEC 62619** “Safety requirements for secondary lithium cells and batteries for use in industrial applications”
- **UN/DOT 38.3** “Transportation Testing for Lithium Batteries”

Non-exhaustive list of applicable standards and regulations

**CHATHAM-KENT
BATTERY ENERGY
STORAGE SYSTEM**

 **Kruger**
Energy

INNERGEX
Renewable Energy.
Sustainable Development.

BATTERY ENERGY STORAGE SYSTEM SAFETY



SAFETY IN THE DESIGN

- Adequate equipment selection, engineering and safety measures to ensure risks are properly mitigated
- Application of higher than recommended separation distances between battery containers and other equipment to avoid propagation in case of an incident
- Batteries installed in self-contained National Electrical Manufacturers Association (NEMA) container enclosures, including monitoring, safety and thermal conditioning systems
- Project specific Emergency Response Plan with the local fire department and training provided during development and operation

BATTERY ENERGY STORAGE SYSTEM SAFETY

SAFETY SYSTEMS FOR FIRE PREVENTION AND MITIGATION

- 24/7 remote system monitoring both at the battery and system levels
- Fire, Gas and Smoke detectors installed in each container
- Automatic Fire Suppression systems
- Automatic ventilation system to avoid concentration of gases inside the container in the unlikely event of a thermal-runaway, with autonomous power and fail-safe venting opening in case of power loss
- Fire Alarms and Fire Control Panel to monitor the entire site



Fire, Smoke and Gas detectors



Aerosol fire suppression system



Active ventilation system



Fire alarms and Fire Control Panel

PROJECT CONTEXT

IESO FORECASTS EMERGING ELECTRICITY DEMAND

Increasing demand

- Population growth
- Electrification of certain sectors and vehicles
- Economic growth, including in the mining, industrial, and agricultural sectors

Decreasing supply

- Retirement of the Pickering Nuclear Plant
- Refurbishment of other nuclear generating units
- Expiring contracts for existing facilities

IESO PROCUREMENT

Long-Term Request for Proposals

- 2,500 megawatts
- Projects in operation in 2027

Expedited Long-Term Request for Proposals

- 1,500 megawatts, including 900 megawatts from BESS
- Projects in operations starting in May 2025

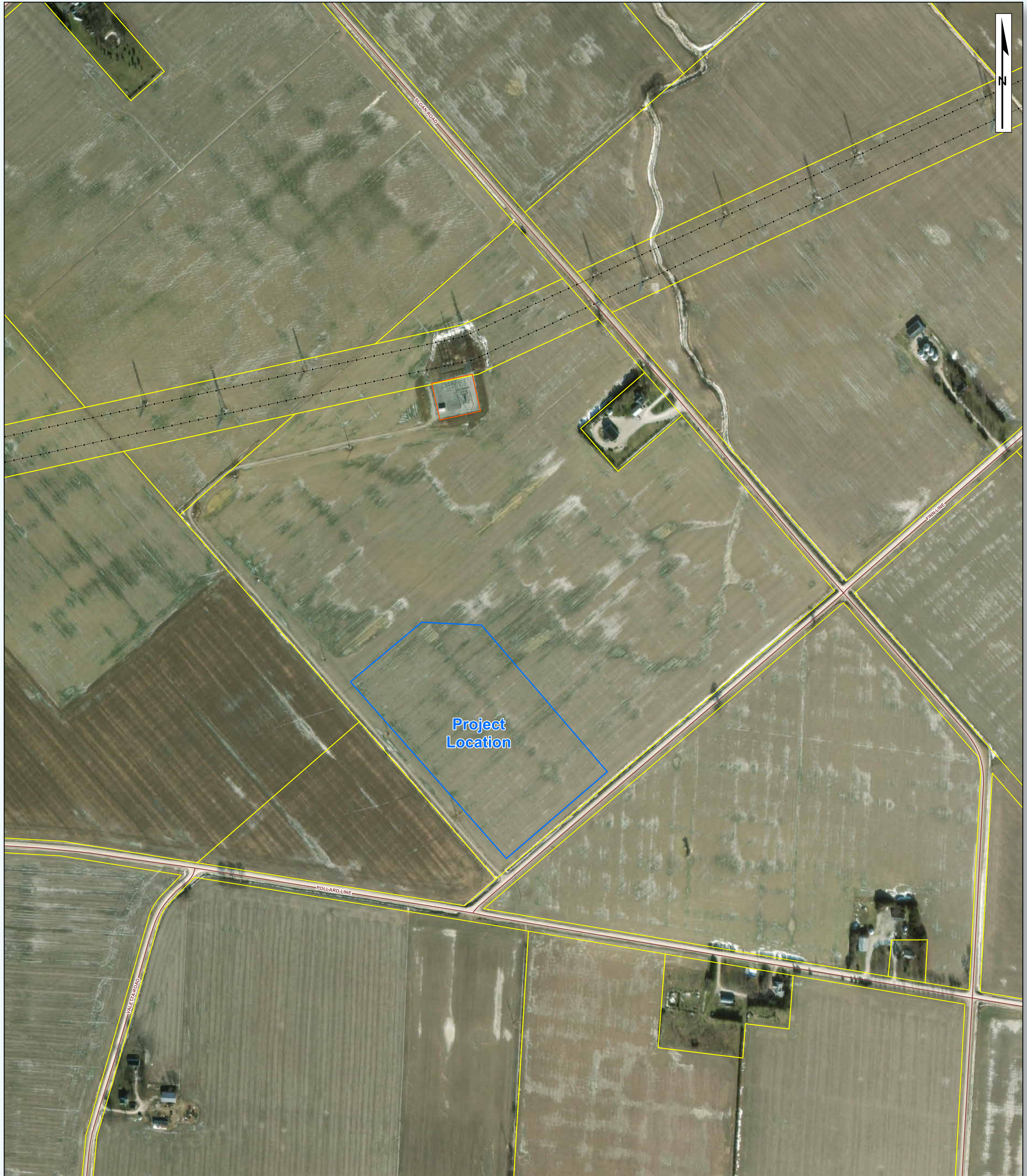
Projects must:

- 1) be larger than 5 megawatt
- 2) deliver continuous electricity for at least 4 hours

REGULATORY COMPLIANCE

The Project will be designed to comply with federal, provincial and local requirements, including:

- Species at Risk and wildlife habitats
- Wetlands and watercourses
- Cultural and archaeological resources
- Regulatory noise limits
- Setbacks from existing infrastructures
- Safety
- Zoning by-law



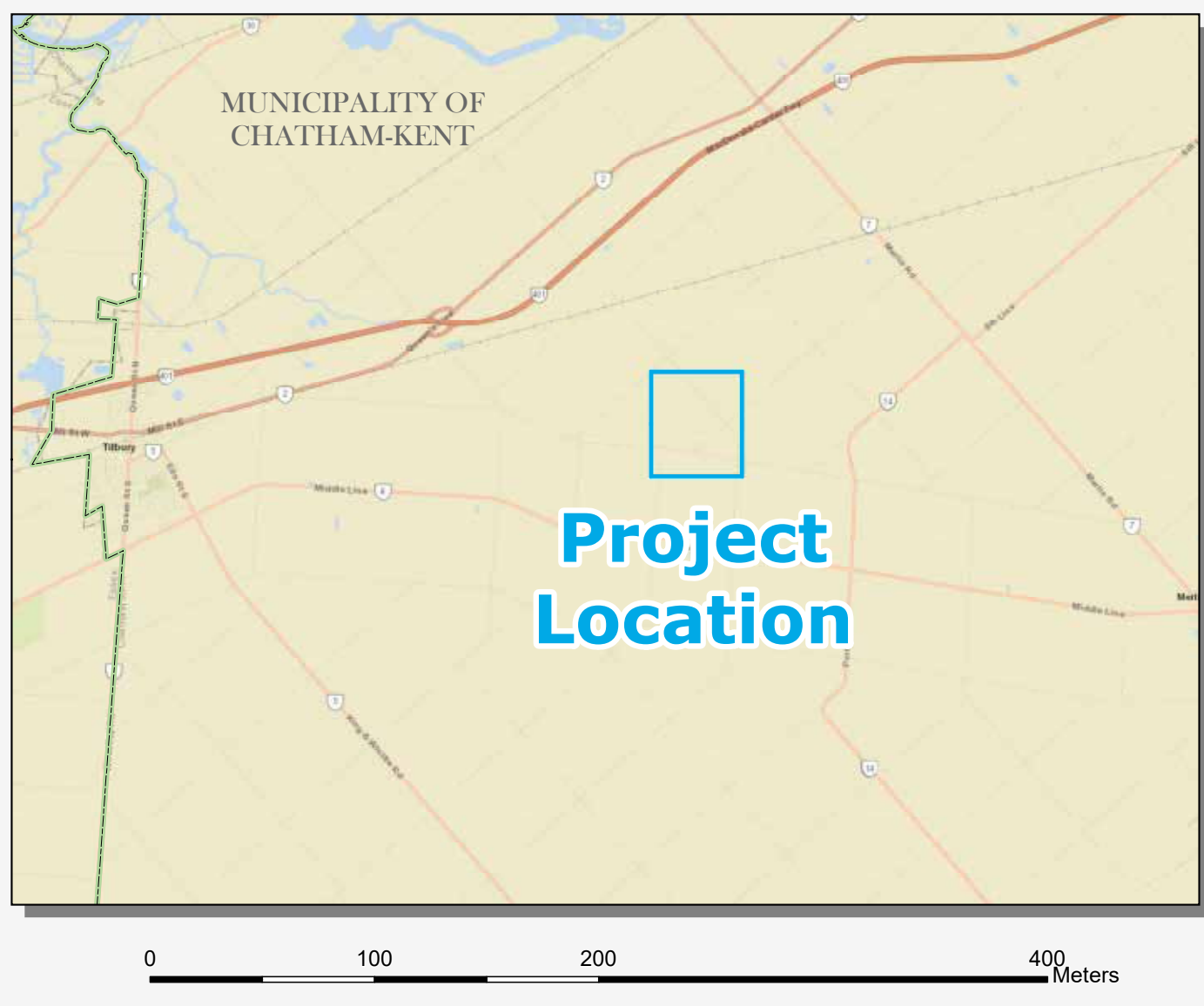
Legend



Project Components

- Project Location
- Land Parcel

Other Components


- Road
- Existing Transmission Line (230 kV)
- Existing Substation



Chatham-Kent BESS

PROJECT LOCATION MAP



10412397-230110-PV
 January 10, 2023
 Projection: UTM Zone 17, NAD83
 Sources: LIO, Teranet

**CHATHAM-KENT
BATTERY ENERGY
STORAGE SYSTEM**



ANNEX B: PUBLIC MEETING PHOTOS



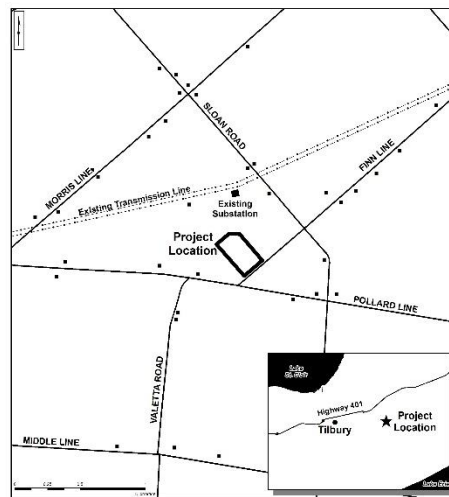
ANNEX C: PUBLIC MEETING NOTICE

CHATHAM-KENT BATTERY ENERGY STORAGE SYSTEM PROJECT

NOTICE OF COMMUNITY PUBLIC MEETING

Kruger Energy L.P. and Innergex Renewable Energy Inc. are developing the Chatham-Kent Battery Energy Storage System (CK-BESS) project located in the Municipality of Chatham-Kent, Ontario, in response to the Independent Electricity System Operator's (IESO) expedited request for proposals (the "E-LT1 RFP"). This program was launched to address regional electricity system needs, driven by increasing demand, the retirement of the Pickering nuclear plant, the refurbishment of other nuclear generating units, as well as expiring contracts for existing facilities.

The proposed 145 MW BESS project will be sited on approximately 5.7 hectares of private land, located approximately 7.5 km east of Tilbury, near the intersection of Finn line and Pollard Line.



COMMUNITY PUBLIC MEETING INFORMATION

Date: Friday, January 27, 2023

Time: 5 p.m. to 8 p.m.

Location: Ryder Hall - Tilbury Arena - 49 Bond Ave, Tilbury, ON N0P 2L0

PROPONENT: Kruger Energy L.P. and Innergex Renewable Energy Inc.

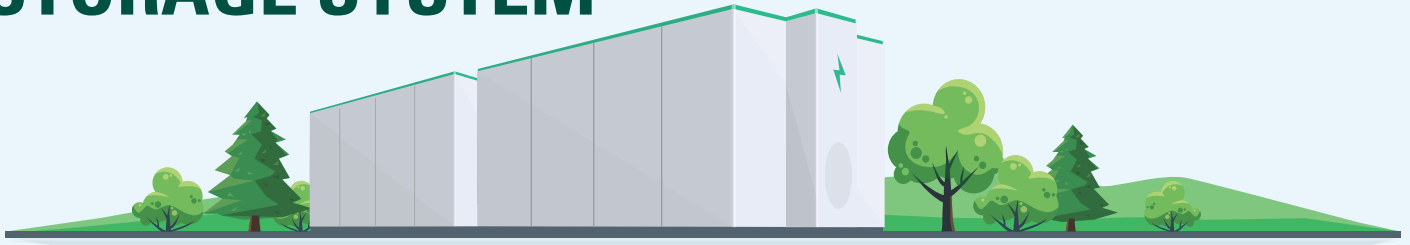
NAME OF THE PROPOSED PROJECT: Chatham-Kent Battery Energy Storage System (CK-BESS)

This public meeting is being held as part of the early community engagement requirements for the E-LT1-RFP. Proponent representatives will be available to discuss the project. Should it be awarded a contract by the IESO, the Proponent will work on obtaining all required environmental and municipal authorizations to build and operate this battery energy storage system project, while pursuing its engagement efforts with the community to share project information and updates. All updates and resources will also be available on the dedicated website: www.chathamkentbess.com.

If you cannot attend the event or if you have any questions, please contact us at 1 (855) 447-3999 or by email at info@chathamkentbess.com. We look forward to meeting with you to discuss about the project and its benefits.

ANNEX D: PUBLIC MEETING BROCHURE

CHATHAM-KENT BATTERY ENERGY STORAGE SYSTEM



The Chatham-Kent Battery Energy Storage System (BESS) project is being developed in the municipality of Chatham-Kent, Ontario.

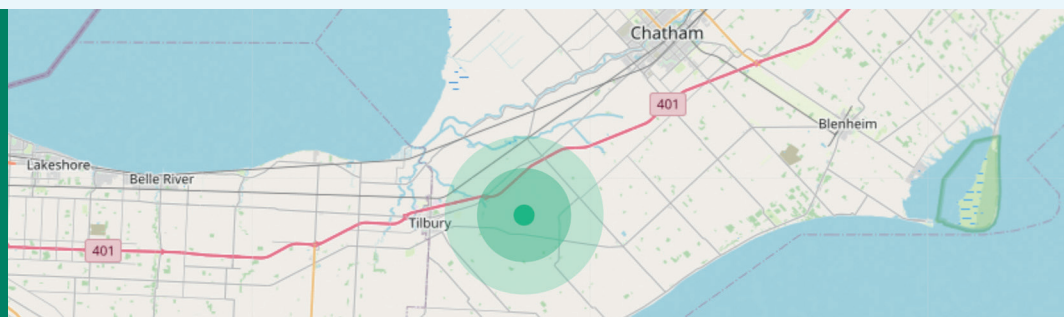
It will be submitted into the Independent Electricity System Operator's ("IESO") Expedited Long-Term Request for Proposals ("E-LT1 RFP"). Ontario is entering a period of emerging electricity system needs, driven by increasing demand, the retirement of the Pickering Nuclear Plant, the refurbishment of other nuclear generating units, as well as expiring contracts for existing facilities.

The proposed 145 MW BESS project will be sited on approximately 5.7 hectares of private land, located approximately 7.5 km east of Tilbury, near the intersection of Finn Line and Pollard Line.

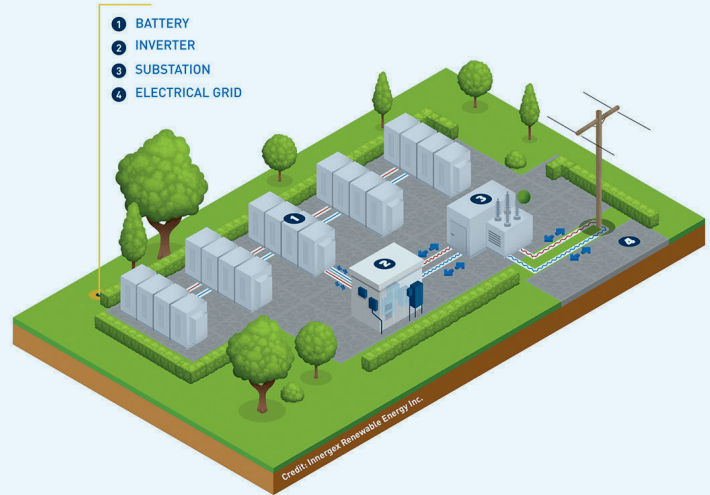
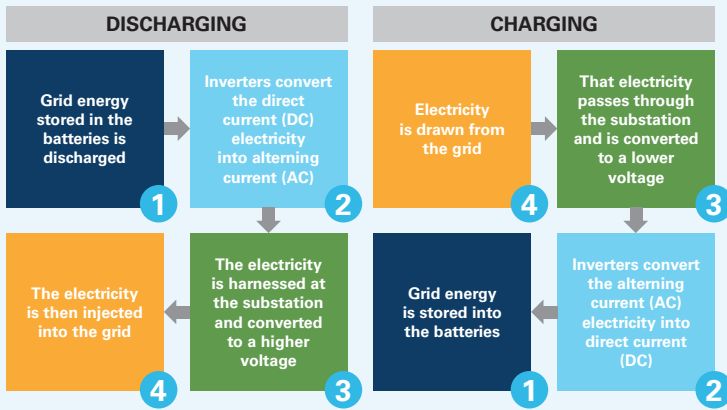
It will have the capacity to provide up to 145 megawatts (MW) of energy into the electrical grid over 4 hours (580 MWh).

The project is being designed based on environmental studies, regulatory requirements and in consultation with local stakeholders and the community.

Project information, updates and resources are available on the project website:
chathamkentbess.com



IF YOU HAVE ANY QUESTIONS, PLEASE CONTACT US AT
1 (855) 447-3999 or by email at info@chathamkentbess.com.



WHAT IS A BESS?

A BESS is a type of energy storage system. It consists of batteries that are connected to the electrical grid so that excess energy can be stored and drawn when needed. Typically, a BESS consists of battery units, inverters, medium-voltage transformers and a collection system, a substation, an auxiliary power system, and a control building.

WHAT ARE THE BENEFITS OF A BESS?

- Improved grid reliability by smoothing out voltage fluctuations;
- Provides backup power during outages or extreme weather events;
- New tax revenue for the Municipality.

WHAT ARE THE POTENTIAL IMPACTS AND HOW ARE THEY MITIGATED?

Land Use:

The Project will occupy approximately 5.7 hectares of private agricultural land. The Project will be designed to minimise the footprint and to avoid all sensitive areas. At the end of its life, the Project will be removed and the area will be returned to its agricultural use.

Noise:

A BESS produces sound similar to electrical substations. Measures will be implemented to limit the propagation of sound and potential impacts on the community. The project will be designed to comply with applicable noise regulations.

Visual:

BESS sizes vary by manufacturer and technology type. Generally, the containers are about 9 feet tall, about 20 feet long and about 12 feet wide. Acoustic walls and vegetation screens will reduce the Project's visual presence.

Wildlife:

As the site consists of agricultural land, the presence of wildlife is limited. Environmental studies will be completed to fully understand the site and ensure that no critical wildlife habitat is affected. Federal and provincial agencies will be consulted for their input.

Safety:

Emergency situations with BESS are rare. These batteries are very safe and have protocols and maintenance standards to ensure safe and efficient operation. We will work with the first responders and local fire department to ensure they have the necessary technical information, training and equipment to respond to emergency situations.

ANNEX E: NEWSPAPER ADVERTISEMENTS

Trudeau, premiers expected to meet for health talks

RYAN TUMILTY

OTTAWA Prime Minister Justin Trudeau has agreed to a long demanded meeting with provincial premiers to talk about health-care funding.

Trudeau announced Wednesday morning he had invited premiers to Ottawa on Feb. 7 for a “working meeting.” Trudeau has been in Hamilton, Ont., this week for meetings with his cabinet, ahead of a return to Parliament next week.

Trudeau said the meeting with premiers is about finding a way to address the real issues.

“It’ll be a good moment for us to gather but we’re not going to be signing deals on that particular moment.” Intergovernmental Affairs Minister Dominic LeBlanc said later in the day he hopes the meeting next month will lead to solid agreements quickly. He said he is conscious that both the federal government and the provinces have budgets coming up.

“We would hope to have an agreement before the budget is even tabled,” he said.

Premiers have been demanding a meeting with Trudeau for more than a year to discuss health-care funding. The provincial leaders want Trudeau to significantly raise the amount of money the federal government contributes to 35 per cent of health-care costs.

The federal government argues it already provides that through tax-point transfer agreements, but the provinces want an increase in the Canada health transfer. Meeting their target would cost the federal treasury \$28 billion.

Trudeau said there are other issues at play, including staffing shortages, support for mental health and better data sharing.

“Let’s be clear, providing money is certainly part of the solution and we will do that. But funding alone won’t solve the issues that we’re



Prime Minister Justin Trudeau will meet with premiers in Ottawa on Feb. 7 for health-care funding talks. NICK IWANYSHYN/THE CANADIAN PRESS

seeing.”

The federal Liberals have insisted that in exchange for the funding boost the provinces commit to data sharing, and better recruiting and accountability. Trudeau said he wants a deal that noticeably improves the system.

“Canadians need to see improvements, better results and outcomes including timely active access to family doctors, no matter where you live, a strong and sustainable health workforce, access in a timely fashion to better mental health care and access to digital health information that follows them to any health professional,” he said.

A source familiar with the federal government’s position said it is

looking at a 10-year deal and Ottawa is prepared to put more money on the table, but the source would not provide a dollar figure.

Even under the existing formula, health-care transfers will rise this year because they are tied to economic growth; they are expected to rise to just shy of \$50 billion.

The source said the talks seemed stalled as recently as last fall, but premiers have indicated they were more open to some of the Liberals’ strings, including better data collection, a focus on recruiting more workers and accountability about how the money is spent.

The negotiations will aim to create a global agreement with all provinces, the source said, but will

also allow for individual arrangements with provinces where necessary to focus on specific areas.

Ontario Premier Doug Ford welcomed the news.

“We have a lot to discuss, including making sure the federal government properly funds the health care people rely on. When Team Canada works together, there’s nothing we can’t do.”

Manitoba Premier Heather Stefanson, the current chair of the council of the federation, said she was hopeful even if they had little detail from the government.

“We still don’t have any actual federal proposals, but I’m cautiously optimistic ...”

Postmedia Network

Angry protests target Liberal cabinet retreat

TRISTIN HOPPER

Hamilton, Ont., has become the scene of large, chaotic demonstrations in recent days as protesters convened to target a retreat by the cabinet of Prime Minister Justin Trudeau.

From Monday to Wednesday, the 39-member cabinet gathered in the Ontario city in advance of the resumption of parliamentary sittings next week.

The ministers were met Monday by a “slow roll” of about 100 cars honking horns and flying flags on the street in front of the Sheraton Hotel hosting the retreat. A large crowd also flanked both sides of the street outside a Royal Canadian Legion in nearby Stoney Creek, where Trudeau had been rumoured to be planning an appearance.

And on Tuesday night, a crowd of several dozen carrying flags and air horns pressed against the windows of the Earth to Table Bread Bar, a downtown restaurant where cabinet members were inside eating dinner.

After the meal, RCMP security and Hamilton police formed a tight cordon around the prime minister as he walked into the crush of protesters and back toward the Sheraton Hotel.

A video of the chaos posted to social media by reporter Harrison Faulkner has now been viewed more than 1.2 million times. Trudeau can be seen smiling and waving as he’s barraged by obscenities and cries of “traitor.”

Moving the prime minister out of the building had required a bit of sleight-of-hand on the part of security. Officers had moved the prime minister’s official motorcade to the restaurant’s back door to divert the main body of the protest crowd — and then slipped Trudeau out the front door on foot.

“We’re not going to let a handful of angry people interfere with the democratic process,” was Trudeau’s reaction at a Wednesday press event.

Postmedia Network

CHATHAM-KENT BATTERY ENERGY STORAGE SYSTEM INVITATION – COMMUNITY PUBLIC MEETING

The Community of Chatham-Kent is invited to a public information meeting to discuss the Chatham-Kent Battery Energy Storage System (CK-BESS) project, which is being developed by Kruger Energy L.P. and Innergex Renewable Energy Inc.

The 145 MW project, located in the Municipality of Chatham-Kent, Ontario, would be sited on approximately 5.7 hectares of private land, located approximately 7.5 km east of Tilbury, near the intersection of Finn Line and Pollard Line.



To learn more about the project, citizens can attend the community public meeting:

Date:
Friday, January 27, 2023

Time:
5 p.m. to 8 p.m.

Location:
Ryder Hall - Tilbury Arena
49 Bond Ave, Tilbury, ON N0P 2L0

www.chathamkentbess.com

FOR ANY QUESTION ABOUT THE PUBLIC INFORMATION SESSION OR THE PROJECT, please contact us at 1 (855) 447-3999 or by email at info@chathamkentbess.com.

COLD WEATHER PET TIPS



If it's too cold for you to go outside, it's too cold for your pet! Winter's chill affects animals, just like it affects people. Exposure to harsh conditions can cause serious illness or death to animals, particularly during periods of freezing rain and rapid temperature fluctuations. Canada's laws require that animals receive adequate shelter and care. Willful failure to provide adequate shelter could lead to prosecution and a fine, jail sentence or prohibition from having custody of animals.



Here are some useful cold weather safety tips.

1. Never leave your pet alone in a cold car. Cars hold in the cold, acting like refrigerators, which can cause your pet to freeze to death.
2. Keep animals away from puddles. They may contain ethylene glycol found in antifreeze which can be fatal if ingested.
3. Keep your pets warm. If it's too cold for you to stay outside, it's too cold for your pet. Although some breeds can withstand colder temperatures, it is important to supply adequate housing.
4. Keep your pets away from bodies of water. With melting ice and rising water levels, lakes can be extremely dangerous for you and your pet.
5. Wipe your pet's paws and underside after being outside. Salt and ice melt can irritate and burn, and also be fatal if ingested.
6. Be aware of cats seeking warmth under vehicle hoods. Try knocking on the hood of your car to scare them away.
7. Don't let your dog off leash especially during a snowstorm. They can easily lose their scent and get lost.
8. A warm place to sleep. Ensure your pet has a thick, cozy bed or blanket away from any drafts and off the cold floors.
9. Dress for the weather. Use booties and winter sweaters to help keep your pets warm during outdoor excursions.
10. Prepare an emergency pet survival kit. You never know when a storm might keep you from being able to leave the house for extended periods.

Remove ice, salt and caked mud from your pet's paws and coat immediately. Before walks put doggie shoes on your dog's paws.

Bath Time? Grooming Time? Leave it to us . . . Shaggy Dog Grooming Boutique
444 Riverview Dr., Chatham • 519-354-2871
"A little off the chin please"

Grand Ave. PET HOSPITAL
222 Grand Ave. West, Chatham (619) 364-0222
grandwestvet@gmail.com • www.grandwestvet.com

KENDRICK FUNERAL HOME LTD.
4 Victoria Ave., Chatham (519) 352-2390
Serving Kingsville, Wheatley & Chatham
A LIFE CELEBRATION CENTRE
kendrickfuneralhome.com

Serving Pet Owners of Chatham-Kent Since 1976
Living Things PET CENTRE
519-436-0313
Open 7 days a week
Mon, Tues, Wed & Sat: 9am - 6pm • Thurs & Fri: 9am - 6pm • Sun: 11am - 5pm
436 St. Clair St., Chatham ~ www.livingthings.com

SGS
Specialized Pest Management for the Agri Food sector!
Thamesville • 519-892-4232
sgspestmanagement.ca
Rodent Management

MORTGAGES / LOANS
CONSOLIDATE DEBTS LOWER YOUR PAYMENTS
Difficult Situations Accepted
Borrow \$50,000 for \$283.50/mth \$100,000 for \$567.00/mth \$150,000 for \$850.50/mth \$200,000 for \$1134.00/mth \$250,000 for \$1417.50/mth
We also arrange unsecured lines of credit/loans
Whether you are looking to purchase a home, refinance your mortgage, or consolidate debt, it's important that you are making an educated decision and receiving professional unbiased advice.
24 Hour Service
Call John at 519-252-6953 - 24 hours or email john@unimorcapital.com
UNIMOR CAPITAL CORPORATION
Bottleage Lic# 10173

IT'S GOLD OUTSIDE!
We have an excellent selection of Sweaters, Coats and Boots!
petvalu
your pet - your store
647 Grand Ave W, Chatham • 619-361-2432
Follow us f Pet Valu Chatham ON & @petvaluchatham

Chatham-Kent Sexual Assault Crisis Centre
Did you know that gender-based violence and animal abuse are often linked?
Threats of harm to beloved pet companions are sometimes used as a method of control over others.
Help End Abuse and Violence!
24 Hour Crisis Line: 519-354-8688
To schedule an appointment, book a presentation, or for information about sexual assault / harassment / abuse / exploitation, please call the crisis line during business hours.
Website: ckaacc.org • Facebook: @CKSACC • Instagram: ckaacc

THE ARTS/NEWS

Blackburn to play Chatham Feb. 4

The Chatham Voice

The band Blackburn is set to play the KBD Hall in Chatham on Feb. 4, bringing a legacy of family talent.

Blackburn is Toronto's first family of blues, soul and funk. It is a band of brothers with the core of the band consisting of Brooke, Duane

and Cory Blackburn. Their music is rich in the traditions of the blues, but is infused with R&B, soul and funk.

Blackburn brings it all together with conscious lyrics to create a smooth and soulful groove.

The sons of legendary R&B performer Dean Blackburn, they have continued in the tradition of their

father. It's in their DNA.

They bring their funk/soul/blues to festivals and fans across Canada and the U.S. Blackburn arrives with respect and accolades within the music industry as well. The band received the Maple Blues Award for Best New Band in 2010, and a Juno nomination for Blues Album of the Year in 2016.

Duane Blackburn received a Maple Blues Award nomination for Keyboard/Piano Players of the year in 2019 and in 2020. Cory Blackburn earned a Maple Blues Award nomination for Drummer of the Year in 2020.

Tickets are \$30 for Canada South Blues Society members and \$35 for non-members. They are available online at ticketscene.ca or at the KBD Hall, Kakoon Spa in Ridgetown or call Bob Christmas at 519-676-9150 for inquiries or tickets.

Canada South Blues Society is a not-for-profit organization out of Windsor and Chatham-Kent.



Contributed image

Juno nominated Blackburn will perform in Chatham on Feb. 4.

Vaxx control bid falls short at council

The Chatham Voice

An attempt by rookie councillor Rhonda Jubenville to put the decision-making process around mandatory vaccines for municipal staff into the hands of council was defeated in a 12-5 vote Jan. 16. Jubenville's motion, seconded by South Kent Coun. Ryan

Doyle, saw yes votes coming from Chatham councillors Conor Allin and Michael Bondy, as well as East Kent Coun. Steve Pinsonneault.

There was no discussion on the actual vote, however three deputations speaking out against mandatory COVID-19 vaccines were presented earlier in the meeting.

Jubenville's motion did not mention COVID-19 vaccinations specifically. In her comments, Jubenville said she believes Chatham-Kent needs to be pro-active and align with other Ontario jurisdictions where vaccine decisions were made solely by council.

Village on the Thames Residents are Healthier!

Village on the Thames offers the best of retirement living with an exciting activity calendar and a friendly, caring staff that offer 24/7 support.

You're one of the family when you choose S&R.

Call our friendly team today to learn more about "LIFE" at Village on the Thames.
850 Grand Ave. West, Chatham
519-351-7220

www.villageonthames.com

BLACKBURN

WIN TICKETS!

Enter to win two tickets to see Blackburn at the KBD Club on February 4 at 7:30pm.

Critically acclaimed! Juno and Maple Blues Award nominees!

Blackburn is a band of brothers – literally. Duane, Brooke, Cory and Robert all share the Blackburn name. A thread of Soul is in almost every track the band records.

To enter our contest, send an e-mail to michelle@chathamvoice.com by Wednesday, February 1st at 4pm, with the heading, Blackburn Tickets and a winner will be chosen at random from the entries received.

Additional tickets available at ticketscene.ca or call 519-676-9150. Tickets are \$30/Members. \$35/Non-members.

THE CHATHAM VOICE
YOUR Community Newspaper

CHATHAM-KENT BATTERY ENERGY STORAGE SYSTEM INVITATION – COMMUNITY PUBLIC MEETING

The Community of Chatham-Kent is invited to a public information meeting to discuss the Chatham-Kent Battery Energy Storage System (CK-BESS) project, which is being developed by Kruger Energy L.P. and Innergex Renewable Energy Inc.

The 145 MW project, located in the Municipality of Chatham-Kent, Ontario, would be sited on approximately 5.7 hectares of private land, located approximately 75 km east of Tilbury, near the intersection of Finn Line and Pollard Line.

Kruger Energy **INNERGEX**
Renewable Energy. Sustainable Development.

To learn more about the project, citizens can attend the community public meeting:

Date: Friday, January 27, 2023
Time: 5 p.m. to 8 p.m.
Location: Ryder Hall - Tilbury Arena
49 Bond Ave, Tilbury, ON N0P 1L0

www.chathamkentbess.com

FOR ANY QUESTION ABOUT THE PUBLIC INFORMATION SESSION OR THE PROJECT, please contact us at 1 (855) 447-3999 or by email at info@chathamkentbess.com.

McDonald's Open for Business



By Ryan Percy

The golden arches have lit up in Tilbury.

With their grand opening on January 11, the team at Tilbury's new McDonald's have finally opened the doors. Now residents of Tilbury can enjoy hot salted fries and juicy burgers while on the go.

This newest McDonald's franchise is the twelfth put in across Southern Ontario by Jason Trussell, president of JnJ Foods Inc.

For him, the main goal of opening new restaurants is to give back to the community in different ways.

"We want to make sure we're part of the fabric of the community we operate in," Trussell said. "It's going to be a year of firsts as we figure out the Tilbury community, but we're looking forward to it."

The first way they are giving back is through offering jobs in the community. Approximately 90 positions have been filled as of the opening. Trussell plans to have the location staffed by 110 to 120 workers when it is up in full swing.

The second is through fundraising, something they have already started doing to give

back to the community.

"We're working with Ashley's place," Trussell said. "We're donating one dollar from every Big Mac sold for the first three weeks we're open."

The ribbon cutting ceremony was filled with cheers as Trussell was joined by Mayor Canniff to heft the giant scissors. With a snip of the ribbon held by Grimace and the Hamburglar the location was officially opened.

While the air was electric with joy, Mayor Canniff said the grand opening marks more to come for Tilbury and the region.

"I had all sorts of people going gaga over the fact Tilbury was getting a McDonald's," Mayor Canniff said. "When a McDonald's opens, other things start coming and Tilbury and Chatham-Kent is a growing community, so it means a lot."

With dreams of hot burgers and milkshakes in the future it seems everyone is wishing the best for the new golden arched franchise in Tilbury.

"I hope this location does beyond their wildest dreams and expectations," Mayor Canniff said. "If McDonald's succeeds Chatham-Kent will succeed."

CK approaching unwelcomed milestone

By Bird Bouchard
Local Journalism Initiative Reporter

As two COVID-19 outbreaks at Chatham-Kent's hospital are now declared over, a new outbreak has been declared.

According to the Chatham-Kent Health Alliance, seven cases of health-care acquired COVID-19 have been identified in the Complex Continuing Care Unit, located on the fourth floor of the hospital's Chatham site.

As a result, Chatham-Kent Public Health declared an outbreak in the unit on Jan. 9.

An outbreak also remains in effect in the Rehabilitation Unit at the Chatham site.

The two other COVID-19 outbreaks in the hospital's Medicine A and B units, which were declared on Dec. 30, 2022, have now been declared over. However, there were also three new outbreaks reported, including the Chatham-Kent Health Alliance rehabilitation unit, Hudson Manor in Tlbury and Blenheim Community Village.

A total of 54 new cases of the virus were reported in the municipality, which is the highest weekly average in more than a month. The daily average of new cases sits at eight new cases.

"The hospital remains a safe place to receive care," CKHA said in a news release.

\$1 MEDIUM **\$2**
EACH PLUS TAX

LATTE
ICED COFFEE
PREMIUM ROAST COFFEE
CAPPUCINO

February 14th - March 12th
67 Mill Street West, Tilbury, ON

Excludes flavoured beverages. Not valid with any other offer. For a limited time only. At participating McDonald's restaurants in Canada. Product availability varies by restaurant. Prices exclude delivery. © 2023 McDonald's Printed in Canada.

SUBSCRIBE **\$19.99 (tax incl.) per year**
Call: (226) 780 1122

CHATHAM-KENT BATTERY ENERGY STORAGE SYSTEM INVITATION – COMMUNITY PUBLIC MEETING

The Community of Chatham-Kent is invited to a public information meeting to discuss the Chatham-Kent Battery Energy Storage System (CK-BESS) project, which is being developed by Kruger Energy L.P. and Innergex Renewable Energy Inc.

The 145 MW project, located in the Municipality of Chatham-Kent, Ontario, would be sited on approximately 5.7 hectares of private land, located approximately 7.5 km east of Tilbury, near the intersection of Finn Line and Pollard Line.

www.chathamkentbess.com

FOR ANY QUESTION ABOUT THE PUBLIC INFORMATION SESSION OR THE PROJECT, please contact us at **1 (855) 447-3999** or by email at info@chathamkentbess.com.

GET NOTICED

ADVERTISE WITH US

CALL
(226) 975 7975